



US Army Corps
of Engineers
Alaska District

Public Notice of Application for Permit

Regulatory Division (1145)
CEPOA-RD
Post Office Box 6898
JBER, Alaska 99506-0898

PUBLIC NOTICE DATE:	January 15, 2016
EXPIRATION DATE:	February 16, 2016
REFERENCE NUMBER:	POA-2015-587
WATERWAY:	Miluveach River

Interested parties are hereby notified that a Department of the Army permit application has been received for work in waters of the United States as described below and shown on the enclosed project drawings.

Comments on the described work, with the reference number, should reach this office no later than the expiration date of this Public Notice to become part of the record and be considered in the decision. Please contact Mary Romero at (907) 753-2773, toll free from within Alaska at (800) 478-2712, by fax at (907) 753-5567, or by email at mary.r.romero@usace.army.mil if further information is desired concerning this notice.

APPLICANT: Stephen Brashear, ConocoPhillips Alaska, Inc. (CPAI), PO Box 100360, Anchorage, Alaska 99501 (907) 263-4691

LOCATION: The project site is located within Section 22, T. 10 N., R. 7 E., Umiat Meridian; USGS Quad Map Beechey Point B-5; Latitude 70.2107° N., Longitude 150.3273° W.; 15 miles east of Nuiqust, Alaska.

PURPOSE: The applicant's stated purpose is to develop a pad and access road to provide continued support for development of oil and gas resources within the Kuparuk River Unit.

PROPOSED WORK: The placement of 129,500 cubic yards (cy) of fill material into 16.5 acres of jurisdictional Palustrine emergent wetlands for the construction of a pad and access road. 122,911 cy of material would be placed into 15.23 acres of wetlands to construct the pad which would be 1040' long x 628' wide (footprint of 1060' long x 648' wide) and would have three rig camps, vehicle parking, bullrails, a tanker truck loading area with fuel tank, bulk storage tanks, equipment staging, and a safety station; additionally 6,589 cy of material would be placed into 1.27 acres of wetlands to construct an access road 500' long x 35' wide (footprint 500' x 55').

All work would be performed in accordance with the enclosed plan (sheets 1-4), dated October 2, 2015.

ADDITIONAL INFORMATION: The proposed project would not have any new drill sites, cross country pipelines, or overhead power lines. Electricity would be brought to the camps from existing infrastructure, and power cables would be buried. The development would utilize the existing Kuparuk road infrastructure for access to the project site and material source. Material for the project would come from C or E material site pits.

Work would begin in April 2016 if permits have been received, all work would be completed by August 2016. No tundra disturbing activities would occur from June 1 through July 31 to avoid the bird nesting season.

APPLICANT PROPOSED MITIGATION: The applicant proposes the following mitigation measures to avoid, minimize, and compensate for impacts to waters of the United States from activities involving discharges of dredged or fill material.

a. Avoidance: No new drill sites, cross-country pipelines, or overhead power lines would be proposed with this construction to avoid further impacts.

b. Minimization: The size of the Kuparuk Drilling Annex Pad has been planned for the smallest footprint necessary to meet operational needs. The proposed pad location also avoids ponds.

c. Compensatory Mitigation: ConocoPhillips Alaska, Inc. proposes in-lieu fees as a means of compensatory mitigation for the unavoidable impacts to waters of the U.S. resulting from this project. The Conservation Fund has advised CPAI that it expects to be able to sell in lieu credits before the date on which construction is scheduled to begin for this project. There are currently no mitigation banks available in the service area in which the project is located.

WATER QUALITY CERTIFICATION: A permit for the described work will not be issued until a certification or waiver of certification, as required under Section 401 of the Clean Water Act (Public Law 95-217), has been received from the Alaska Department of Environmental Conservation.

CULTURAL RESOURCES: The latest published version of the Alaska Heritage Resources Survey (AHRs) has been consulted for the presence or absence of historic properties, including those listed in or eligible for inclusion in the National Register of Historic Places. There are no listed or eligible properties in the vicinity of the worksite. Consultation of the AHRs constitutes the extent of cultural resource investigations by the District Commander at this time, and he is otherwise unaware of the presence of such resources. This application is being coordinated with the State Historic Preservation Office (SHPO). Any comments SHPO may have concerning presently unknown archeological or historic data that may be lost or destroyed by work under the requested permit will be considered in our final assessment of the described work.

ENDANGERED SPECIES: The project area is within the known or historic range of the polar bear (*Ursus maritimus*), Steller's eider (*Polysticta stelleri*), and spectacled eider (*Somateria fischeri*).

We have determined the described activity may affect the threatened the polar bear, Steller's eider, and spectacled eider. We have initiated the appropriate consultation procedures under section 7 of the Endangered Species Act with the U.S. Fish and Wildlife Service. Any comments they may have concerning endangered or threatened wildlife or plants or their critical habitat would be considered in our final assessment of the described work.

ESSENTIAL FISH HABITAT: The Magnuson-Stevens Fishery Conservation and Management Act, as amended by the Sustainable Fisheries Act of 1996, requires all Federal agencies to consult with the NMFS on all actions, or proposed actions, permitted, funded, or undertaken by the agency, that may adversely affect Essential Fish Habitat (EFH). No EFH species are known to use the project area.

TRIBAL CONSULTATION: The Alaska District fully supports tribal self-governance and government-to-government relations between Federally recognized Tribes and the Federal government. Tribes with protected rights or resources that could be significantly affected by a proposed Federal action (e.g., a permit decision) have the right to consult with the Alaska District on a government-to-government basis. Views of each Tribe regarding protected rights and resources will be accorded due consideration in this process. This Public Notice serves as notification to the Tribes within the area potentially affected by the proposed work and invites their participation in the Federal decision-making process regarding the protected Tribal right or resource. Consultation may be initiated by the affected Tribe upon written request to the District Commander during the public comment period.

PUBLIC HEARING: Any person may request, in writing, within the comment period specified in this notice, that a public hearing be held to consider this application. Requests for public hearings shall state, with particularity, reasons for holding a public hearing.

EVALUATION: The decision whether to issue a permit will be based on an evaluation of the probable impacts, including cumulative impacts of the proposed activity and its intended use on the public interest. Evaluation of the probable impacts, which the proposed activity may have on the public interest, requires a careful weighing of all the factors that become relevant in each particular case. The benefits, which reasonably may be expected to accrue from the proposal, must be balanced against its reasonably foreseeable detriments. The outcome of the general balancing process would determine whether to authorize a proposal, and if so, the conditions under which it will be allowed to occur. The decision should reflect the national concern for both protection and utilization of important resources. All factors, which may be relevant to the proposal, must be considered including the cumulative effects thereof. Among those are conservation, economics, aesthetics, general environmental concerns, wetlands, cultural values, fish and wildlife values, flood hazards, floodplain values, land use, navigation, shore erosion and accretion, recreation, water supply and conservation, water quality, energy

needs, safety, food and fiber production, mineral needs, considerations of property ownership, and, in general, the needs and welfare of the people. For activities involving 404 discharges, a permit will be denied if the discharge that would be authorized by such permit would not comply with the Environmental Protection Agency's 404(b)(1) guidelines. Subject to the preceding sentence and any other applicable guidelines or criteria (see Sections 320.2 and 320.3), a permit will be granted unless the District Commander determines that it would be contrary to the public interest.

The Corps of Engineers is soliciting comments from the public; Federal, State, and local agencies and officials; Indian Tribes; and other interested parties in order to consider and evaluate the impacts of this proposed activity. Any comments received will be considered by the Corps of Engineers to determine whether to issue, modify, condition or deny a permit for this proposal. To make this decision, comments are used to assess impacts on endangered species, historic properties, water quality, general environmental effects, and the other public interest factors listed above. Comments are used in the preparation of an Environmental Assessment and/or an Environmental Impact Statement pursuant to the National Environmental Policy Act. Comments are also used to determine the need for a public hearing and to determine the overall public interest of the proposed activity.

AUTHORITY: This permit will be issued or denied under the following authority:

(X) Discharge dredged or fill material into waters of the United States – Section 404 Clean Water Act (33 U.S.C. 1344). Therefore, our public interest review will consider the guidelines set forth under Section 404(b) of the Clean Water Act (40 CFR 230).

Project drawings and a Notice of Application for State Water Quality Certification are enclosed with this Public Notice.

District Commander
U.S. Army, Corps of Engineers

Enclosures

STATE OF ALASKA

DEPT. OF ENVIRONMENTAL CONSERVATION
DIVISION OF WATER
401 Certification Program
Non-Point Source Water Pollution Control Program

DEPARTMENT OF ENVIRONMENTAL CONSERVATION
WQM/401 CERTIFICATION
555 CORDOVA STREET
ANCHORAGE, ALASKA 99501-2617
PHONE: (907) 269-7564/FAX: (907) 334-2415

NOTICE OF APPLICATION FOR STATE WATER QUALITY CERTIFICATION

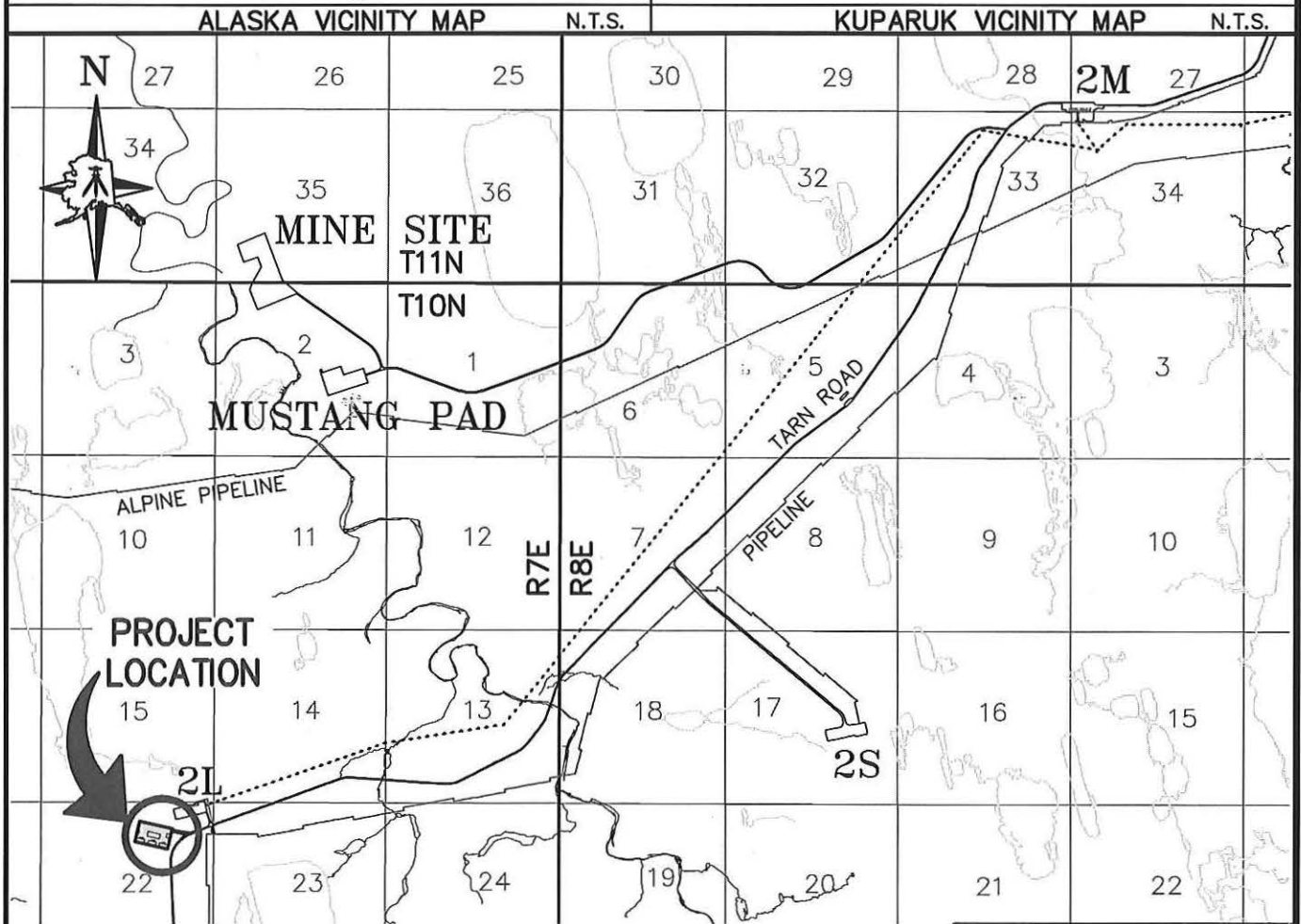
Any applicant for a federal license or permit to conduct an activity that might result in a discharge into navigable waters, in accordance with Section 401 of the Clean Water Act of 1977 (PL95-217), also must apply for and obtain certification from the Alaska Department of Environmental Conservation that the discharge will comply with the Clean Water Act, the Alaska Water Quality Standards, and other applicable State laws. By agreement between the U.S. Army Corps of Engineers and the Department of Environmental Conservation, application for a Department of the Army permit to discharge dredged or fill material into navigable waters under Section 404 of the Clean Water Act also may serve as application for State Water Quality Certification.

Notice is hereby given that the application for a Department of the Army Permit described in the Corps of Engineers' Public Notice No. **POA-2015-587, Miluveach River**, serves as application for State Water Quality Certification from the Department of Environmental Conservation.

After reviewing the application, the Department may certify there is reasonable assurance the activity, and any discharge that might result, will comply with the Clean Water Act, the Alaska Water Quality Standards, and other applicable State laws. The Department also may deny or waive certification.

Any person desiring to comment on the project, with respect to Water Quality Certification, may submit written comments to the address above by the expiration date of the Corps of Engineer's Public Notice.

REV	DATE	BY	CK	APP	DESCRIPTION	REV	DATE	BY	CK	APP	DESCRIPTION
3	01/07/16	JAH	NRB		Add Dimension	2	12/15/15	MBS	MEH		ADDRESSED COMMENTS



THIS PROJECT IS LOCATED
IN HARRISON BAY (A-1)
QUADRANGLE

VICINITY MAP
1" = 1 MILE

Alaska, Inc.

AREA: 2L MODULE: XXXX UNIT: D2

KUPARUK FIELD

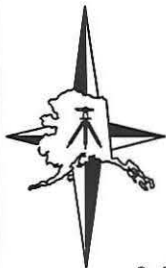
POA-2015-587, Miluveach River
ConocoPhillips Alaska Inc.
Drawings dated October 2, 2015
Sheet 1 of 4

CADD FILE NO.
LK660D153

10/02/2015

DRAWING NO.
NSK 6.60-d

N



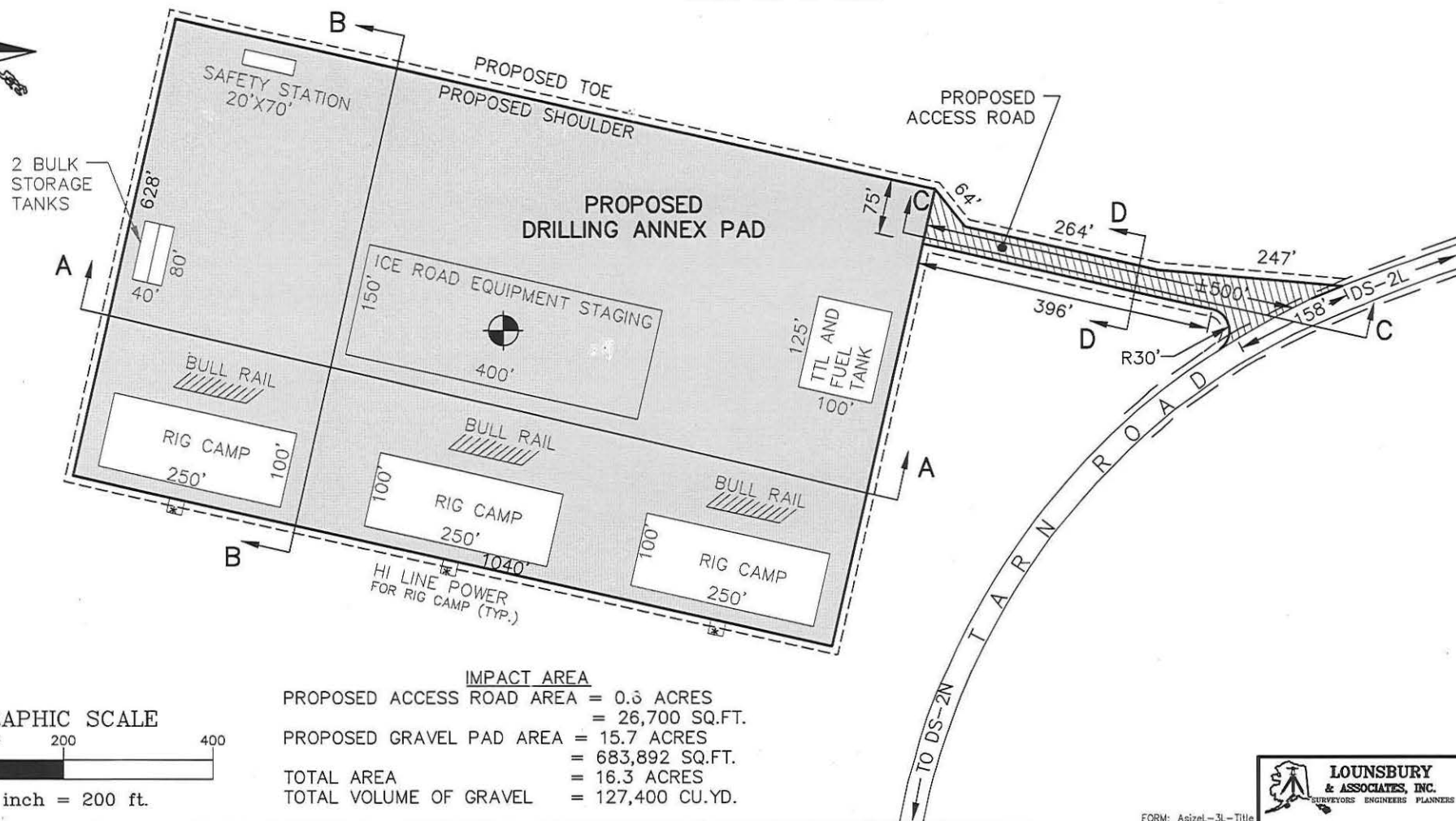
NOTES:

1. COORDINATES ARE A.S.P. ZONE 4, NAD 83.
2. VOLUME QUANTITIES ARE BASED ON APPROXIMATELY 5' OF FILL WITH 2:1 SIDE SLOPES.
3. SEE SHEET 3 & 4 FOR PROFILE VIEWS.



GRAVEL PAD CENTROID
 N 5,926,589
 E 1,599,828
 LAT. 70° 12' 38.66"
 LONG. 150° 19' 38.39"

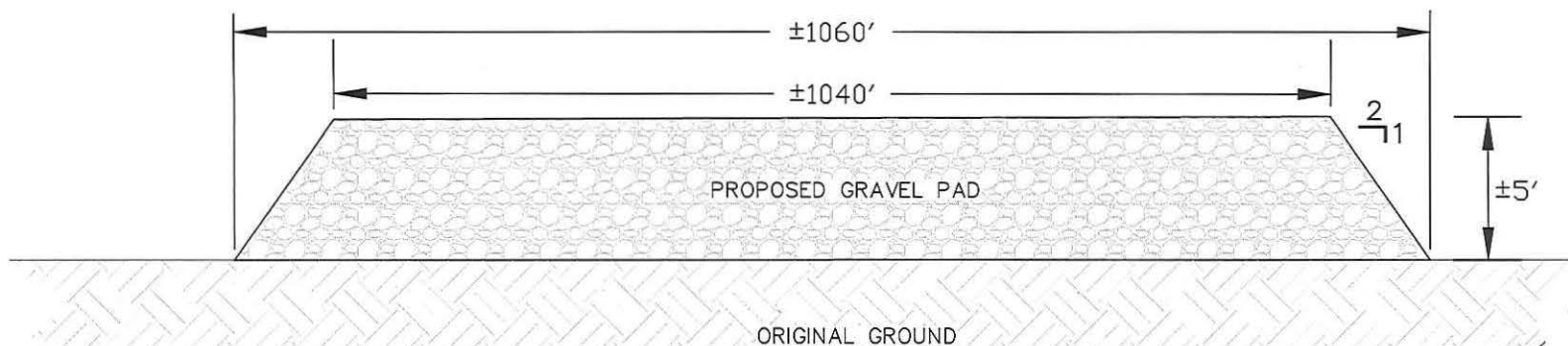
DS2L



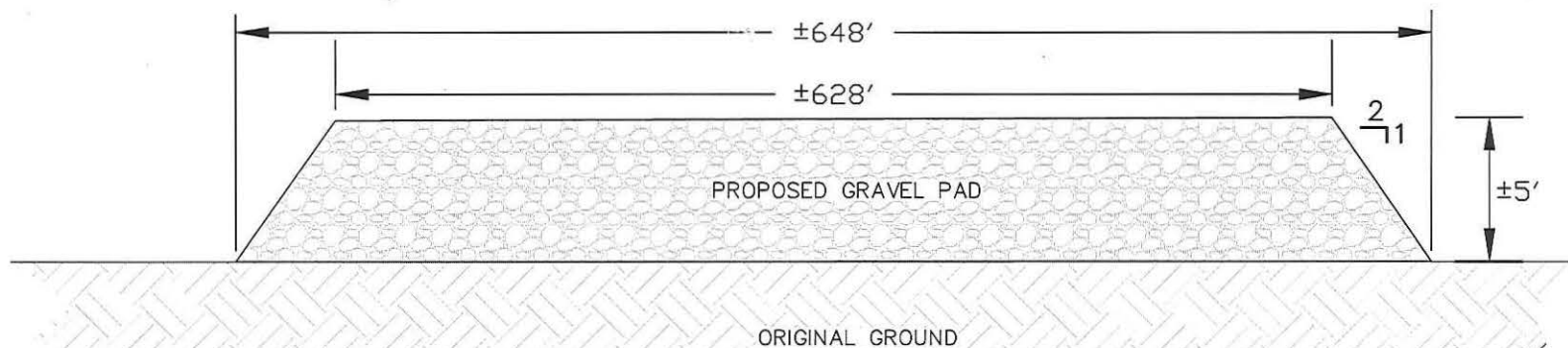
LOUNSBURY
 & ASSOCIATES, INC.
 SURVEYORS ENGINEERS PLANNERS

FORM: A-sizeL-3L-Title

								ConocoPhillips Alaska, Inc.				AREA:	MODULE: XXXX KUPARUK FIELD DRILLING ANNEX PAD	UNIT:
								APPROVAL: —				DATE: 10/02/15 LK660D153		
								DRAWING NO. NSK 6.60 - d153				POA-2015-587, Miluveach River ConocoPhillips Alaska Inc. Drawings dated October 2, 2015 Sheet 2 of 4		
3	01/07/16	Add Dimension	JAH	NRB										
2	12/15/15	ADDRESSED COMMENTS	MBS	MEH										
1	10/05/15	UPDATE DRAWING TITLE	LGM	MEH										
REV. NO.	CUST APP	DATE	REVISIONS				BY	CHK	JOB ENGR	PROJ ENGR				



(PROPOSED GRAVEL PAD CROSS-SECTION A-A DETAIL)
NTS



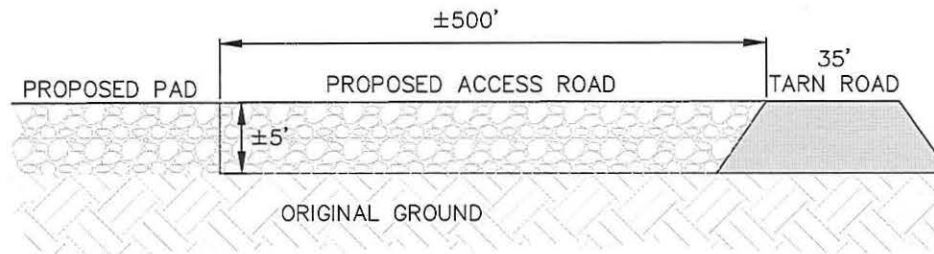
(PROPOSED GRAVEL PAD CROSS-SECTION B-B DETAIL)
NTS



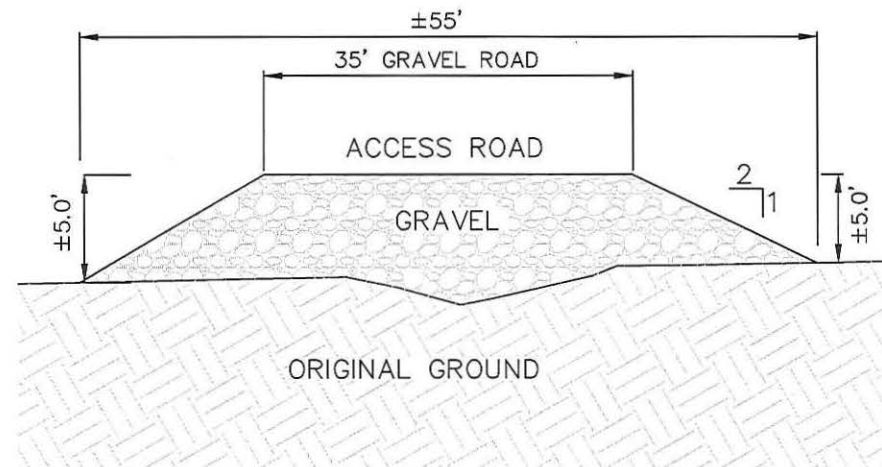
FORM: A-size-3L-Title

--	--	--	--	--	--	--	--	--	--	--	--	--	--	--	--	--	--	--	--	--	--	--	--	--	--	--	--	--	--	--	--	--	--	--	--	--	--	--	--	--	--	--	--	--	--	--	--	--	--	--	--	--	--	--	--	--	--	--	--	--	--	--	--	--	--	--	--	--	--	--	--	--	--	--	--	--	--	--	--	--	--	--	--	--	--	--	--	--	--	--	--	--	--	--	--	--	--	--	--	--	--	--	--	--	--	--	--	--	--	--	--	--	--	--	--	--	--	--	--	--	--	--	--	--	--	--	--	--	--	--	--	--	--	--	--	--	--	--	--	--	--	--	--	--	--	--	--	--	--	--	--	--	--	--	--	--	--	--	--	--	--	--	--	--	--	--	--	--	--	--	--	--	--	--	--	--	--	--	--	--	--	--	--	--	--	--	--	--	--	--	--	--	--	--	--	--	--	--	--	--	--	--	--	--	--	--	--	--	--	--	--	--	--	--	--	--	--	--	--	--	--	--	--	--	--	--	--	--	--	--	--	--	--	--	--	--	--	--	--	--	--	--	--	--	--	--	--	--	--	--	--	--	--	--	--	--	--	--	--	--	--	--	--	--	--	--	--	--	--	--	--	--	--	--	--	--	--	--	--	--	--	--	--	--	--	--	--	--	--	--	--	--	--	--	--	--	--	--	--	--	--	--	--	--	--	--	--	--	--	--	--	--	--	--	--	--	--	--	--	--	--	--	--	--	--	--	--	--	--	--	--	--	--	--	--	--	--	--	--	--	--	--	--	--	--	--	--	--	--	--	--	--	--	--	--	--	--	--	--	--	--	--	--	--	--	--	--	--	--	--	--	--	--	--	--	--	--	--	--	--	--	--	--	--	--	--	--	--	--	--	--	--	--	--	--	--	--	--	--	--	--	--	--	--	--	--	--	--	--	--	--	--	--	--	--	--	--	--	--	--	--	--	--	--	--	--	--	--	--	--	--	--	--	--	--	--	--	--	--	--	--	--	--	--	--	--	--	--	--	--	--	--	--	--	--	--	--	--	--	--	--	--	--	--	--	--	--	--	--	--	--	--	--	--	--	--	--	--	--	--	--	--	--	--	--	--	--	--	--	--	--	--	--	--	--	--	--	--	--	--	--	--	--	--	--	--	--	--	--	--	--	--	--	--	--	--	--	--	--	--	--	--	--	--	--	--	--	--	--	--	--	--	--	--	--	--	--	--	--	--	--	--	--	--	--	--	--	--	--	--	--	--	--	--	--	--	--	--	--	--	--	--	--	--	--	--	--	--	--	--	--	--	--	--	--	--	--	--	--	--	--	--	--	--	--	--	--	--	--	--	--	--	--	--	--	--	--	--	--	--	--	--	--	--	--	--	--	--	--	--	--	--	--	--	--	--	--	--	--	--	--	--	--	--	--	--	--	--	--	--	--	--	--	--	--	--	--	--	--	--	--	--	--	--	--	--	--	--	--	--	--	--	--	--	--	--	--	--	--	--	--	--	--	--	--	--	--	--	--	--	--	--	--	--	--	--	--	--	--	--	--	--	--	--	--	--	--	--	--	--	--	--	--	--	--	--	--	--	--	--	--	--	--	--	--	--	--	--	--	--	--	--	--	--	--	--	--	--	--	--	--	--	--	--	--	--	--	--	--	--	--	--	--	--	--	--	--	--	--	--	--	--	--	--	--	--	--	--	--	--	--	--	--	--	--	--	--	--	--	--	--	--	--	--	--	--	--	--	--	--	--	--	--	--	--	--	--	--	--	--	--	--	--	--	--	--	--	--	--	--	--	--	--	--	--	--	--	--	--	--	--	--	--	--	--	--	--	--	--	--	--	--	--	--	--	--	--	--	--	--	--	--	--	--	--	--	--	--	--	--	--	--	--	--	--	--	--	--	--	--	--	--	--	--	--	--	--	--	--	--	--	--	--	--	--	--	--	--	--	--	--	--	--	--	--	--	--	--	--	--	--	--	--	--	--	--	--	--	--	--	--	--	--	--	--	--	--	--	--	--	--	--	--	--	--	--	--	--	--	--	--	--	--	--	--	--	--	--	--	--	--	--	--	--	--	--	--	--	--	--	--	--	--	--	--	--	--	--	--	--	--	--	--	--	--	--	--	--	--	--	--	--	--	--	--	--	--	--	--	--	--	--	--	--	--	--	--	--	--	--	--	--	--	--	--	--	--	--	--	--	--	--	--	--	--	--	--	--	--	--	--	--	--	--	--	--	--	--	--	--	--	--	--	--	--	--	--	--	--	--	--	--	--	--	--	--	--	--	--	--	--	--	--	--	--	--	--	--	--	--	--	--	--	--	--	--	--	--	--	--	--	--	--	--	--	--	--	--	--	--	--	--	--	--	--	--	--	--	--	--	--	--	--	--	--	--	--	--	--	--	--	--	--	--	--	--	--	--	--	--	--	--	--	--	--	--	--	--	--	--	--	--	--	--	--	--	--	--	--	--	--	--	--	--	--	--	--	--	--	--	--	--	--	--	--	--	--	--	--	--	--	--	--	--	--	--	--	--	--	--	--	--	--	--	--	--	--	--	--	--	--	--	--	--	--	--	--	--	--	--	--	--	--	--	--	--	--	--	--	--	--	--	--	--	--	--	--	--	--	--	--	--	--	--	--	--	--	--	--	--	--	--	--	--	--	--	--	--	--	--	--	--	--	--	--	--	--	--	--	--	--	--	--	--	--	--	--	--	--	--	--	--	--	--	--	--	--	--	--	--	--	--	--	--	--	--	--	--	--	--	--	--	--	--	--	--	--	--	--	--	--	--	--	--	--	--	--	--	--	--	--	--	--	--	--	--	--	--	--	--	--	--	--	--	--	--	--	--	--	--	--	--	--	--	--	--	--	--	--	--	--	--	--	--	--	--	--	--	--	--	--	--	--	--	--	--	--	--	--	--	--	--	--	--	--	--	--	--	--	--	--	--	--	--	--	--	--	--	--	--	--	--	--	--	--	--	--	--	--	--	--	--	--	--	--	--	--	--	--	--	--	--	--	--	--	--	--	--	--	--	--	--	--	--	--	--	--	--	--	--	--	--	--	--	--	--	--	--	--	--	--	--	--	--	--	--	--	--	--	--	--	--	--	--	--	--	--	--	--	--	--	--	--	--	--	--	--	--	--	--	--	--	--	--	--	--	--	--	--	--	--	--	--	--	--	--	--	--	--	--	--	--	--	--	--	--	--	--	--	--	--	--	--	--	--	--	--	--	--	--	--	--	--	--	--	--	--	--	--	--	--	--	--	--	--	--	--	--	--	--	--	--	--	--	--	--	--	--	--	--	--	--	--	--	--	--	--	--	--	--	--	--

POA-2015-587, Miluveach River
ConocoPhillips Alaska Inc.
Drawings dated October 2, 2015
Sheet 3 of 4



(PROPOSED GRAVEL PAD CROSS-SECTION C-C DETAIL)
NTS



(PROPOSED GRAVEL PAD CROSS-SECTION D-D DETAIL)
NTS



FORM: AsizeL-3L-Title

								ConocoPhillips Alaska, Inc.		AREA:	MODULE: XXXX KUPARUK FIELD DRILLING ANNEX PAD	UNIT:
								APPROVAL: —				
								DATE: 10/02/15		LK660D153		
								DRAWING NO.				
								NSK 6.60 — d153				
3	01/07/16	Add Dimension	JAH	NRB								
2	12/15/15	ADDRESSED COMMENTS	MBS	MEH								
1	10/05/15	UPDATE DRAWING TITLE	LGM	MEH								
REV. NO.	CUST APP	DATE	REVISIONS				BY	CHK	JOB ENGR	PROJ ENGR		

POA-2015-587, Miluveach River
ConocoPhillips Alaska Inc.
Drawings dated October 2, 2015
Sheet 4 of 4